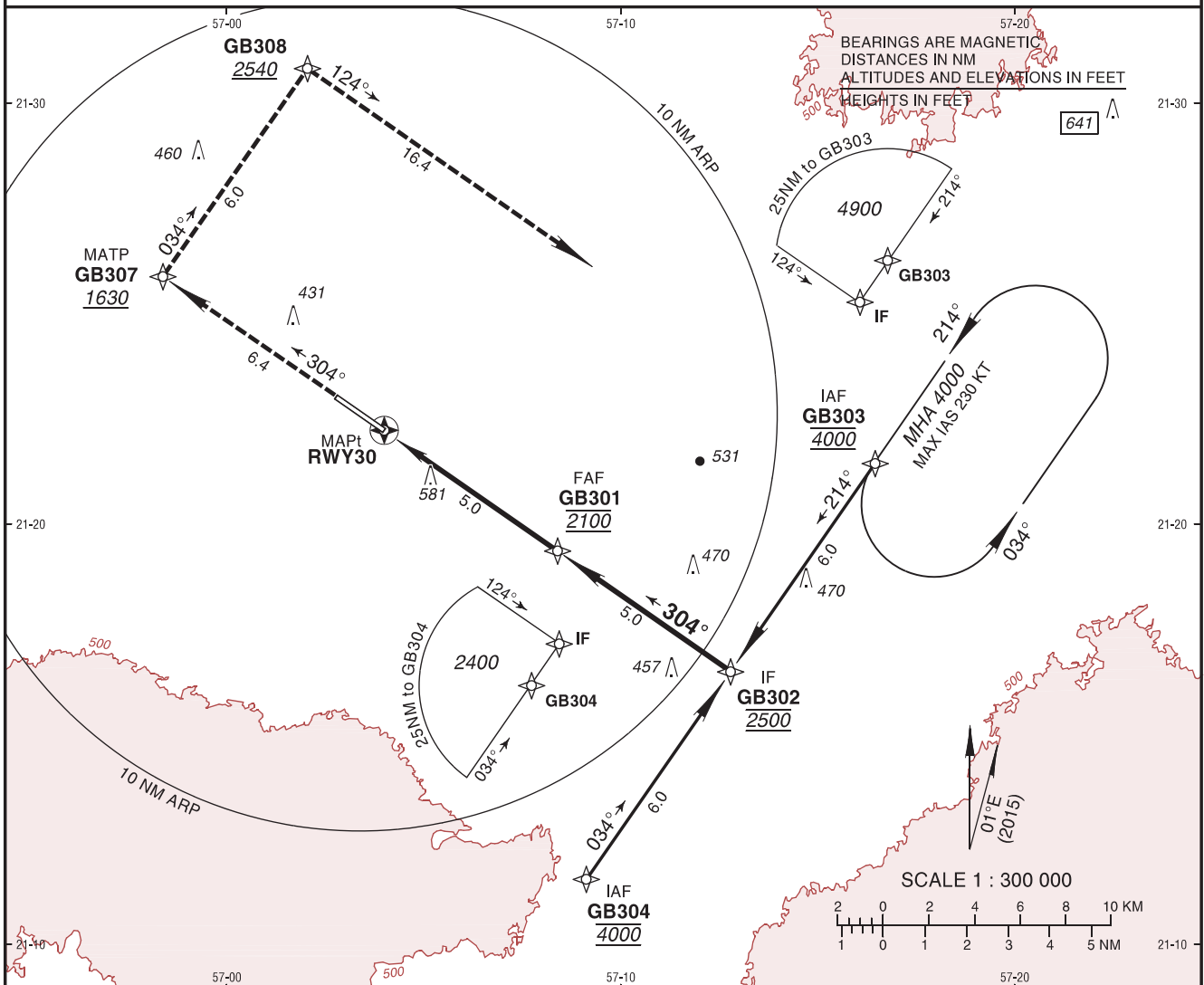


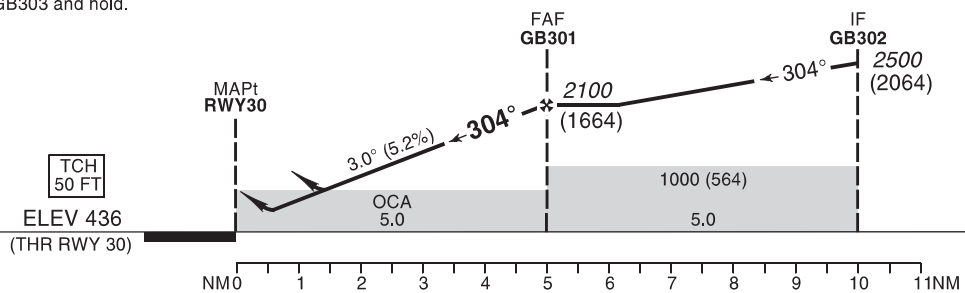
INSTRUMENT APPROACH CHART - ICAO **AD ELEV 442 FT** **QARN ALAM/Qarn Alam OMAN**
 HEIGHTS RELATED TO THR RWY 30 ELEV 436 FT QARN ALAM Information 122.750 RNP RWY 30
 MUSCAT Control 124.700



MISSED APPROACH:

Climb direct to GB307 at or above 1630.
 Turn RIGHT to GB308 at or above 2540.
 Turn RIGHT climbing 4000 to GB303 and hold.
 MAX IAS 195 KT until GB303.

TA 13000



STRAIGHT-IN APPROACH		A	B	C	D	ADVISORY INFORMATION ONLY							
LNAV/VNAV	OCH	186			Not Authorized	NM to RW30	1	2	3	4	5		
	DA(H)	690 (250)				ALT	800 (364)	1130 (694)	1450 (1014)	1770 (1334)	2100 (1664)		
LNAV	OCH	394			Not Authorized								
	MDA(H)	830 (400)											
CIRCLING (HAA)*		A	B	C	D	GS	kt	80	100	120	140	160	180
	OCH	398	498	598	Not Authorized	FAF-MAPt	min:s						
	MDA(H)	840 (400)	940 (500)	1040 (600)		ROD: 5.2%	ft/min	440	550	660	770	880	990

① Timing not authorized for defining the MAPt.
 RNP Approach required.
 BARO VNAV Not authorized below 5°C or above 50°C.

Holding Instruction/Areas RNP RWY 30

Path descriptor	Fix identifier	Inbound course M (T)	Leg Distance	Turn direction	Minimum altitude	Maximum altitude	Speed	Magnetic variation	Navigation performance
Hold	GB303	214° (214.9°)	1 MIN	L	4000		230 KT	1°E	

Route Description: RNP RWY 30

Path descriptor	Fix identifier	Flyover	Course Magnetic (True)	Turn direction	Altitude	Speed limit	Magnetic variation	Distance	Navigation performance
IF	GB303				@4000		1°E		RNP APCH
TF	GB302		214° (214.8°)		@2500		1°E	6.0	RNP APCH
TF	GB301		304° (304.8°)	R	@2100		1°E	5.0	RNP APCH
TF	<u>RWY30</u>	Y	304° (304.8°)		@486		1°E	5.0	RNP APCH

Path descriptor	Fix identifier	Flyover	Course Magnetic (True)	Turn direction	Altitude	Speed limit	Magnetic variation	Distance	Navigation performance
IF	GB304				@4000		1°E		RNP APCH
TF	GB302		034° (034.8°)		@2500		1°E	6.0	RNP APCH
TF	GB301		304° (304.8°)	L	@2100		1°E	5.0	RNP APCH
TF	<u>RWY30</u>	Y	304° (304.8°)		@486		1°E	5.0	RNP APCH

Path descriptor	Fix identifier	Flyover	Course Magnetic (True)	Turn direction	Altitude	Speed limit	Magnetic variation	Distance	Navigation performance
MISSED APPROACH									
DF	GB307		304° (304.8°)		+1630	195 KT	1°E	6.4	RNP APCH
TF	GB308		034° (034.8°)	R	+2540	195 KT	1°E	6.0	RNP APCH
TF	GB303		124° (124.9°)	R	@4000	195 KT	1°E	16.4	RNP APCH
HM	<u>GB303</u>	Y	214° (214.9°)	L	+4000	230 KT	1°E		RNP APCH

Aeronautical Data Tabulation: RNP RWY 30

Waypoint / Fix	Latitude	Longitude	Latitude (MIN)	Longitude (MIN)	Notes
GB303 (IAF)	N21°21'26.25"	E057°16'27.62"	N21°21.438'	E057°16.460'	
GB304 (IAF)	N21°11'32.82"	E057°09'07.75"	N21°11.547'	E057°09.129'	
GB302 (IF)	N21°16'29.58"	E057°12'47.56"	N21°16.493'	E057°12.793'	
GB301 (FAF)	N21°19'21.56"	E057°08'23.86"	N21°19.359'	E057°08.398'	
RWY30 (MAPT)	N21°22'13.42"	E057°03'59.98"	N21°22.224'	E057°04.000'	
GB307 (MATP)	N21°25'52.65"	E056°58'22.88"	N21°25.878'	E056°58.381'	
GB308	N21°30'49.32"	E057°02'03.18"	N21°30.822'	E057°02.053'	